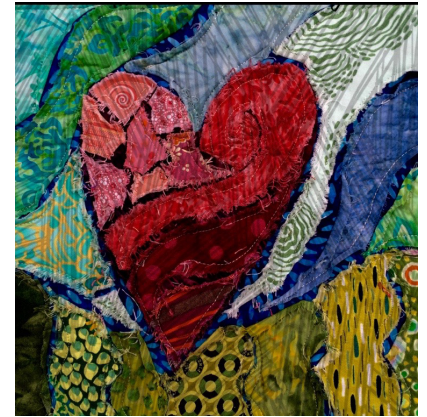


My Crazy Heart

Raw edge machine appliqué is a technique, which leaves the raw edge of appliqué shapes unfinished. Shapes are positioned on the Base Piece (dark blue), and then stitched in place, 1/4" from the raw edge. Once the project is washed and dried, the appliqué edges have a soft frayed edge, adding an awesome texture.



Supplies:

Cut a Dark Blue Piece for main Background Base (slightly larger than template)

Backing..... Sized slightly larger than template

Batting Sized slightly larger than template

S1 through S8 ... Variety of Turquoise for Sky

H1 through H10. Variety of Reds for Heart

G1 through G7... Variety of Green for Grass

Suggested Glue stick, Spray Baste

Instructions

1. Make two copies of the Template, one out of regular paper for the Master and a second out of freezer paper, *transfer all the identification letter and numbers as well.*
2. Cut the freezer paper template apart on all the drawn lines. Press each shape shiny side down on the RIGHT side of fabric chosen for each section. Use a hot dry iron, the freezer paper will lightly stick to the fabric.
3. Cut out each of the pieces on the traced edges of the freezer paper and re-assemble on the Master Template.
4. Layer and center the backing *right side down*, batting and base piece *right side up together, I like to use spray baste.*
5. Work with one section at a time, peeling the freezer paper off as you go. Use a fabric glue stick *lightly* on the **back** of each piece and place right side upon the base piece. Continue, arranging each piece until all sections are in place.
6. Use a walking foot, (if you have one), and reduce your stitch length to approximately 15 stitches per inch for the appliqué. Stitch around each shape 1/4" from the raw edge. If you come to an area where the piece is 1/2" wide or less, stitch precisely through the center. Add any extra quilting or stippling at this time.
7. I prefer to wash and dry the heart at this time, before adding the binding. Once washed and dried, trim excess threads and tangles. Trim edges even and add binding.

My Crazy Heart

Karla Alexander | © 2016
My Crazy Heart

S4

Approximately 8 1/2" x 9 1/2"

S5

S6

H10

H7

H9

H8

H1

S7

S3

H4

H6

H5

S8

S2

H2

S1

H3

G1

G7

G2

G6

G3

G4

G5

