

Enchanted

Finished Size 54" x 75"

Enchanted has several colors that mix and blend into one another, with each group separated by a dark blue arc. I crossed over a few times and combined different color groups – which gave the quilt a little spark as well as made better use of the yardage. If you have a stash, dive in and add in some extra pieces if they fit with your color groups. Enjoy!

Cutting

Yardage is based on 42" wide fabric. Cut across the width (cross-grain) of the fabric from selvage to selvage, referred to as *Width of Fabric*; WOF.

From each of the 6 blue fabrics, cut: 1 strip, 8 1/2" x WOF

Cross-cut each strip into 4 rectangles, 8 1/2" x 10" each for a total of 24

From the dark blue fabric for the Arcs, cut: 5 strips, 8 1/2" x WOF, See cutting arcs, page 3 to complete cutting

From each of the 4 gray pastel fabrics, cut: 1 strip, 8 1/2" x WOF

Cross-cut each strip into 4 rectangles, 8 1/2" x 10" each for a total of 16

From each of the 3 gold fabrics, cut: 1 strip, 8 1/2" x WOF

Cross-cut each strip into 4 rectangles, 8 1/2" x 10" each for a total of 12 total

From each of the 3 pink fabrics, cut: 1 strip, 8 1/2" x WOF

Cross-cut each strip into 4 rectangles, 8 1/2" x 10" each for a total of 12

From the fabric for the Binding, cut: 7 strips, 2 1/2" x WOF

Make Patchwork Blocks:

Note: Any piece-work can be used in the blocks so long it measures 8" x 9 1/2". I used diagonal cuts as well as other free-form patch work.

1. Gather the following rectangles and layer right side up into stacks of 4 each as directed below. Trade same value rectangles from stack to stack as desired (make sure each stack always has 4 different pieces.)

24 Blue: 6 stacks of 4 rectangles

16 Gray: 4 stacks of 4 rectangles, (trade 2 gray rectangles for 2 pink rectangles)

12 Gold: 3 stacks of 4 rectangles, (trade 2 pink rectangles for 2 gold rectangles)

12 Pink: 3 stacks of 4 rectangles, (trade 4 pink rectangles for 2 gray, 2 gold rectangles)

2. Begin with one stack, align edges perfectly. Make a vertical and horizontal cuts through all layers. Rearrange the pieces in each layer by shuffling numerically as shown. Cut each stack differently from one to the next. You can also make the blocks look different by rotating one column 180 degrees.

3. Use an accurate 1/4" seam allowance and sew each shuffled layer together into a block and press. Each block should measure 8" x 9 1/2". Repeat above steps to complete all the stacks.

4. Separate the patchwork blocks in to two sets as listed below:

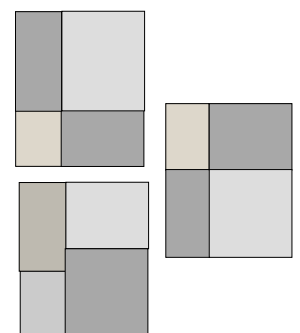
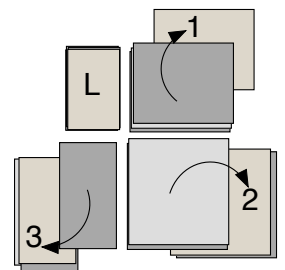
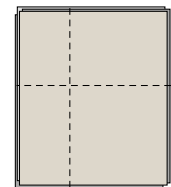
Block centers: Patchwork for Corner Arcs:

Blue: 12..... 12

Gray: 8..... 8

Gold: 6..... 6

Pink: 4..... 6 (extra pink – use as color variations)

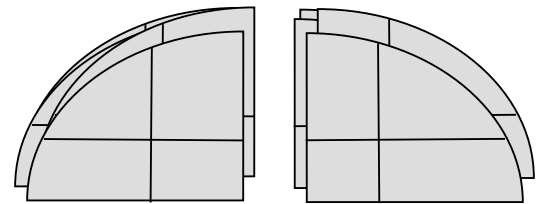
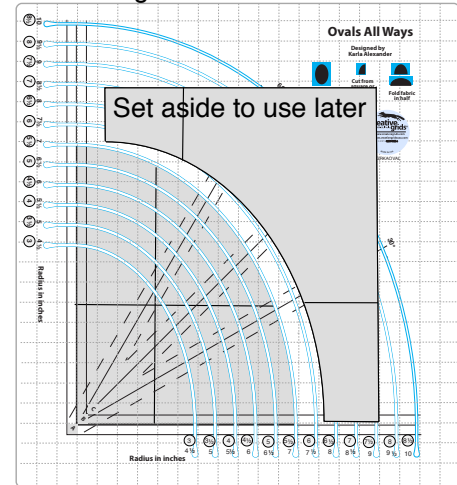


Cutting Corner Arcs From Patchwork Blocks

1. Begin with the 12 blue patchwork blocks set aside for the corner arcs, page 1. Layer the blocks in sets of two each, "RST", right sides together, align edges perfectly.
2. Place the Ovals All Ways ruler on top of the stack and align the lower left corner of the rectangles with the corner placement lines labeled B. *I like to position so the small piece-work will show in the corner if possible.*
3. Cut the arc using the slot labeled 5 1/2", this refers to the width. The **circled** 5 1/2" measurement is in a row of numbers printed along the bottom and left edge of the ruler. The 7" measurement is directly below 5 1/2" and refers to the height of the arc. *If you are uncomfortable cutting through 2 layers at a time, it's fine to cut one at a time, MAKE SURE ONE IS RIGHT SIDE UP AND THE OTHER IS RIGHT SIDE DOWN to cut both a right and left hand image.*
4. After cutting, remove the ruler and set aside both corner arcs, right side up. Repeat with the remaining blocks for a total of 6 right image and 6 left image. Stack same sides together. *Set the remaining block pieces aside for use in the steps below.*
5. Repeat the steps above to complete the following total of corner arcs and set aside. *Note: There will be two extra corners, however the resulting arcs are necessary when pairing sets together.*

- Blue: 6 left 6 right (1 extra)
- Gray: 4 left 4 right
- Gold: 3 left 3 right (1 extra)
- Pink: 3 left 3 right

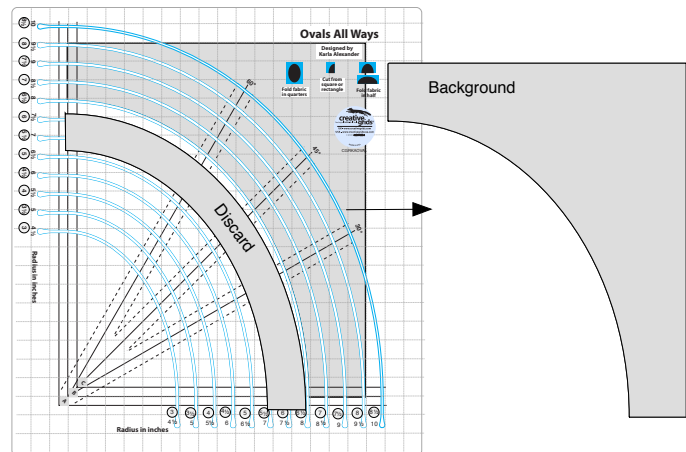
Cut using the 5 1/2" slot



Rotate pieces as shown and stack into same color groups with right and left images separated.

Re-Cutting Background Arcs

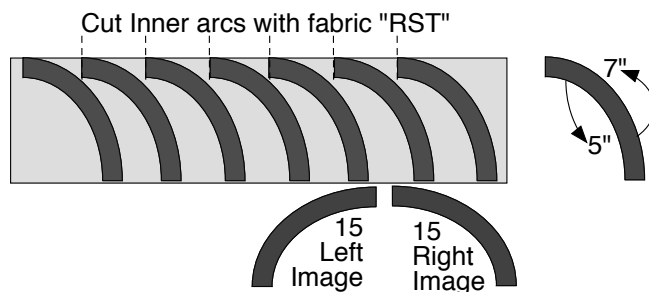
1. Re-position the ruler as shown, align the bottom and left fabric edges with Placement lines Labeled B.
2. Re-cut the arc using the slot labeled 6 1/2", removing just a small amount of fabric along the curve. Re-sizing the arc is crucial so the corner arc and background arc fit together perfectly. Re-size all the background pieces and set aside.



Cutting Dark Blue Inner Arcs

1. Use the 8 1/2" blue strips cut earlier. Layer 2 sets of strips "RST". Place the Ovals All Ways ruler on top of one set, beginning on the left end. Align edges of fabric with the horizontal and vertical Placement Lines B. Cut an arc using the 5" and 7" slot. With fabric "RST", this will create both a right and left image arc. Trim the remaining point off vertically as shown by the dashed lines. Reposition the ruler and cut another arc. Continue in this manner until you have cut a minimum of 6 arcs from the layered strip set. Repeat cutting on the second layered set. Set arcs aside, keeping the right and left images separated.

2. Fold the last 8 1/2" strip in half, "RST" and Repeat step 1, cutting an additional 3 sets of arcs for a total of 15 each, right and left image blue arcs.



Rotate pieces as shown and stack right and left images separated.

Sewing the Blocks Together *Refer to Page 4 for suggestions on sewing and pressing curves.*

1. Refer to the illustration right, (Blocks are arranged in order of the same background color), or see the layout diagram on page 4. Pair the corner arc, inner arc and background pieces together for each block and pin the sets together.

2. Adjust your sewing machine to a "Needle Down" position. Begin with a corner and inner arc. Fold pieces in half to find the exact center of the curve. Pin pieces together at that point. Begin sewing on one end, aligning corner edges. Sew a few inches at a time, re-align the edges as you go.

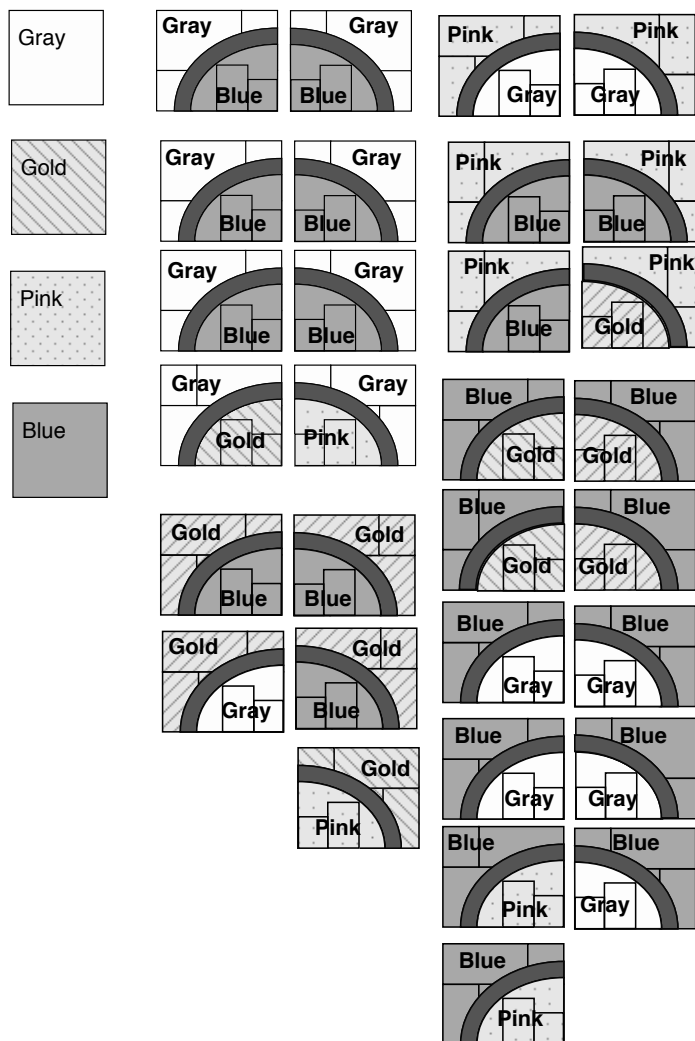
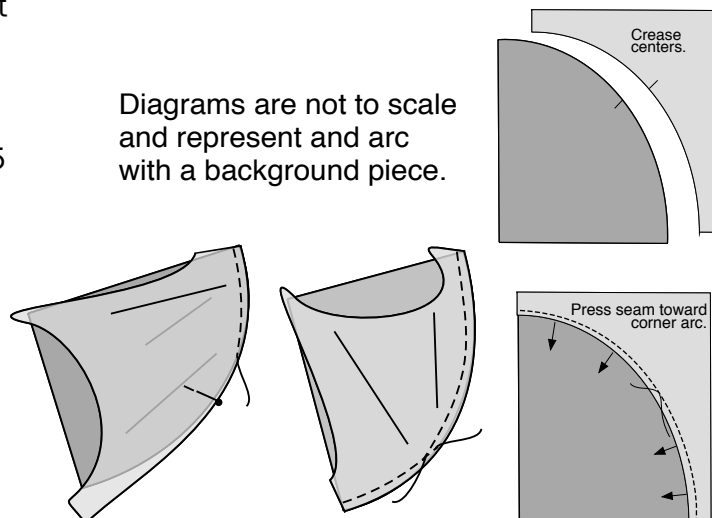
3. Once you are an inch or so away from the pin, merge off the curve and clip the thread, remove the pin. *Merging off results in no threads poking up through the seam allowances.*

4. Flip the unit upside down and begin stitching from the opposite end. Continue as in the steps above until you reach the first line of stitching. Cross over the stitching, then merge off and clip threads. Press seam toward the corner arc.

5. Add the background arc in the same manner. Press seams toward the corner arc. See *Pressing on Page 4. Set blocks aside.*

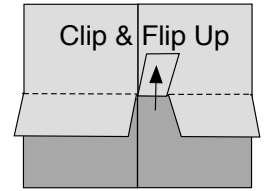
6. Continue sewing the three pieces together for each block until you have completed all sets.

7. Measure several of your blocks to find the final dimensions. Trim all the patchwork blocks set aside on page 1 to this size.



Putting it All Together

1. Refer to the diagram and lay the blocks out into 10 horizontal rows with 6 in each.
2. Sew the blocks into 10 horizontal rows. See arrows for pressing directions. When seam allowances are positioned in the same direction, clip one seam 1/4" away from the seam allowance to release it. Then flip it in the opposite direction so seams will nest.
3. Combine and sew the horizontal rows into sets of 2 each. Press seams in one direction.
4. Combine the sections together to complete the quilt top. Press seams in one direction.



Binding

Bind your quilt using your favorite method or, visit my website at www.saginawstreetquilts.com to view or download instructions.

